

**Specifications**

Nominal Voltage		2 V
Capacity (25°C)	10HR(1.80V)	300 Ah
	3HR(1.75V)	216Ah
	1HR(1.75V)	164Ah
Dimension	Length	171 ± 2mm (6.73inch)
	Width	151 ± 2mm (5.94inch)
	Height	330 ± 2mm (12.99inch)
	Total Height	364 ± 2mm (14.33inch)
Approx. Weight		18kg (39.7lbs) ± 4%
Terminal type		T10
Internal resistance (Fully charged, 25°C)		Approx. 0.8m Ω
Capacity affected by temperature (10HR)	40°C	102%
	25°C	100%
	0°C	85%
	-15°C	65%
Self-discharge (25°C)	3 month	Remaining Capacity: 91%
	6 month	Remaining Capacity: 82%
	12 month	Remaining Capacity: 65%
Nominal operating temperature		25°C ± 3°C (77°F ± 5°F)
Operating temperature range	Discharge	-15°C ~ 50°C (5°F ~ 122°F)
	Charge	-10°C ~ 50°C (14°F ~ 122°F)
	Storage	-20°C ~ 50°C (-4°F ~ 122°F)
Float charging voltage(25°C)		2.25 to 2.30V Temperature compensation: -3mV/°C
Cyclic charging voltage(25°C)		2.30 to 2.35V Temperature compensation: -5mV/°C
Maximum charging current		60A
Terminal material		Copper
Maximum discharge current		2000A(5 sec.)
Designed floating life(20°C)		18~20 years

- ◆ Gelled electrolyte technology;
- ◆ AGM separator;
- ◆ Recognized by UL & CE;
- ◆ ABS container.

**Constant Current Discharge Characteristics (A, 25°C)**

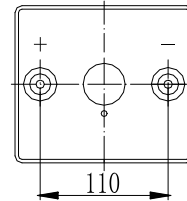
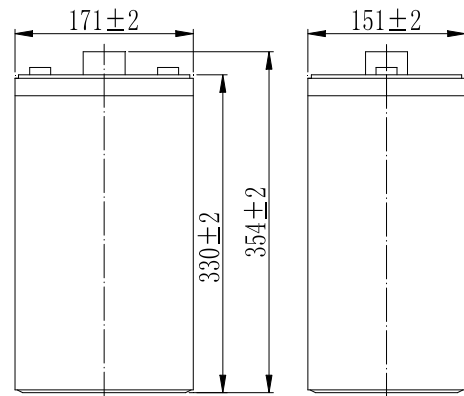
F.V/TIME	30min	60min	2h	3h	4h	5h	6h	8h	10h	20h	24h
1.60V	258	174	107	73.4	61.2	50.5	44.7	35.2	30.5	15.9	13.7
1.65V	253	171	106	73.0	60.8	50.2	44.4	35.0	30.5	15.8	13.7
1.70V	245	167	105	72.5	60.4	49.8	44.1	34.7	30.4	15.8	13.7
1.75V	239	164	103	72.0	60.0	49.5	43.8	34.5	30.2	15.7	13.6
1.80V	230	159	101	69.8	58.2	48.0	42.5	33.5	30.0	15.6	13.5

**Constant Power Discharge Characteristics (Watt, 25°C)**

F.V/TIME	30min	60min	2h	3h	4h	5h	6h	8h	10h	20h	24h
1.60V	482	331	206	144	120	99.5	88.0	70.0	60.8	31.8	27.6
1.65V	473	326	204	143	119	98.9	87.5	69.6	60.7	31.7	27.6
1.70V	458	317	203	142	118	98.2	86.9	69.1	60.5	31.6	27.5
1.75V	447	311	200	141	118	97.5	86.3	68.7	60.1	31.4	27.3
1.80V	431	302	195	137	114	94.6	83.7	66.6	59.7	31.2	27.1

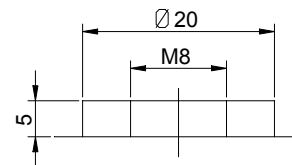
Note: The above characteristics data can be obtained within three charge/discharge cycles.

**Dimensions**



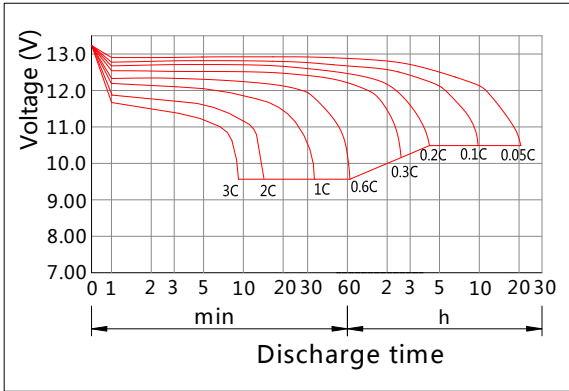
Total Height:364  
(Included Top Cover)

**Terminal**

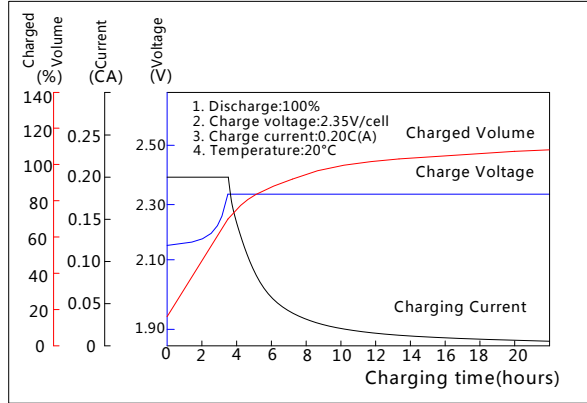


Terminal T10

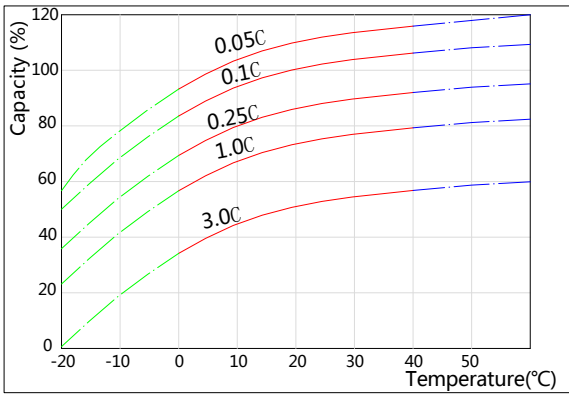
## Discharge Characteristics(25°C)



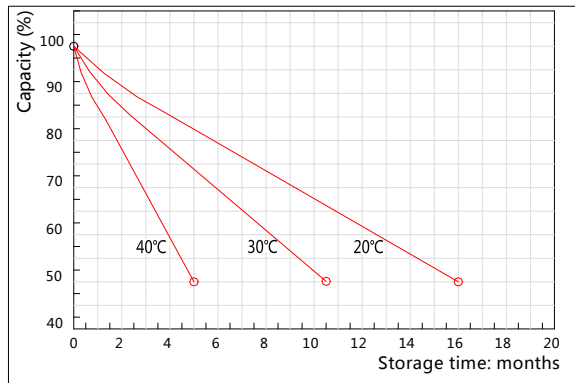
## Charging Characteristics(25°C)



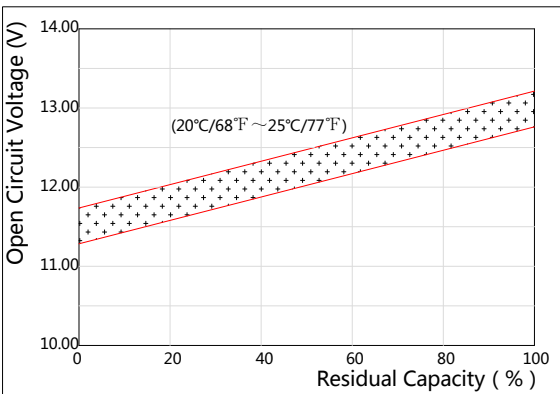
## Effect of Temperature on Capacity



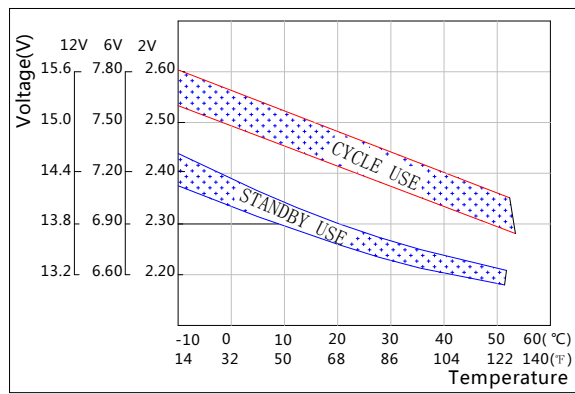
## Self-discharge Characteristics



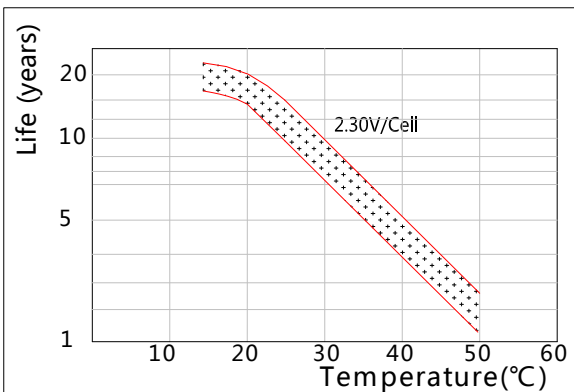
## The Relationship for Open Circuit Voltage and Residual Capacity (25°C)



## The Relationship for Charging Voltage and Temperature



## Floating Life on Temperature



## Cycle Life on D.O.D(25°C)

